

# 135P

## RAILAVATOR



### KEY FEATURES

- Patented High-Rail System allows speeds in excess of 20 mph
- Hydraulically Expandable Undercarriage to allow straddling of track
- 2.1 mph (low) /3.4 (high) mph Off-Track Speed
- Spring Applied/Hydraulically released dry shoe brakes
- 500 hr Engine Service Interval
- Low High-Rail Center of Gravity
- Serviceable by the Nationwide John Deere Dealer Network

### ACCESSORIES AND OPTIONS

Multi-Circuit Hydraulic Package  
High-Flow Hydraulic Circuit  
Boom Anti-Drift Valve  
Hydraulic Hand Tool Circuit  
Insulated High-Rail  
Window Guards Polycarbonate Glass  
Boom Hand Pump  
LED Worklight Upgrade

### STANDARD SPECIFICATIONS

Isuzu 4JJ1  
EPA Final Tier 4/EU Stage IV  
75 kW (101 hp) at 2,000 rpm  
4 Cylinder 3L (182 cu. in.)  
105 L/m (28 gpm) x 2 Max Hyd Flow  
24 Volt - 50 Amp Alternator

### RAILAVATOR SPECIFICATIONS

Hydraulically Powered High Rail Gear  
16" Rail Wheels  
In-Cab Touch Screen Control Center  
24V to 12V Converter  
Beacon  
Door Entry Light  
Pattern Changer  
Oil Drain  
Battery Disconnect  
Front & Rear Auxiliary Lights  
Fire Extinguisher



# 135P

## RAILAVATOR

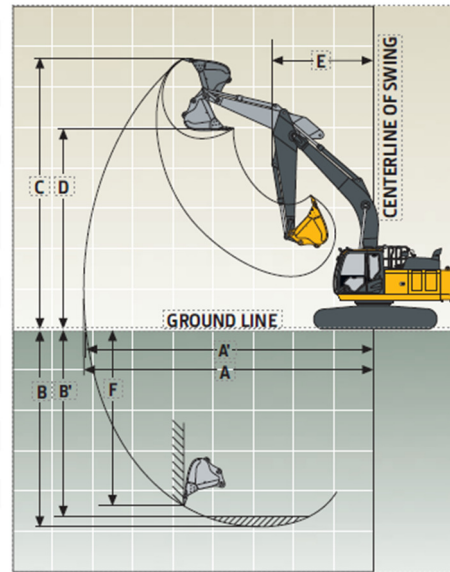


### DIMENSIONS AND WEIGHTS

Operating Weight - 38,500 lbs (without attachments)  
 Arm Digging Force (9'11")  
     SAE 13,490 lbs                      ISO 13,710 lbs  
 Bucket Digging Force  
     SAE 20,460 lbs I                    ISO 23,380 lbs

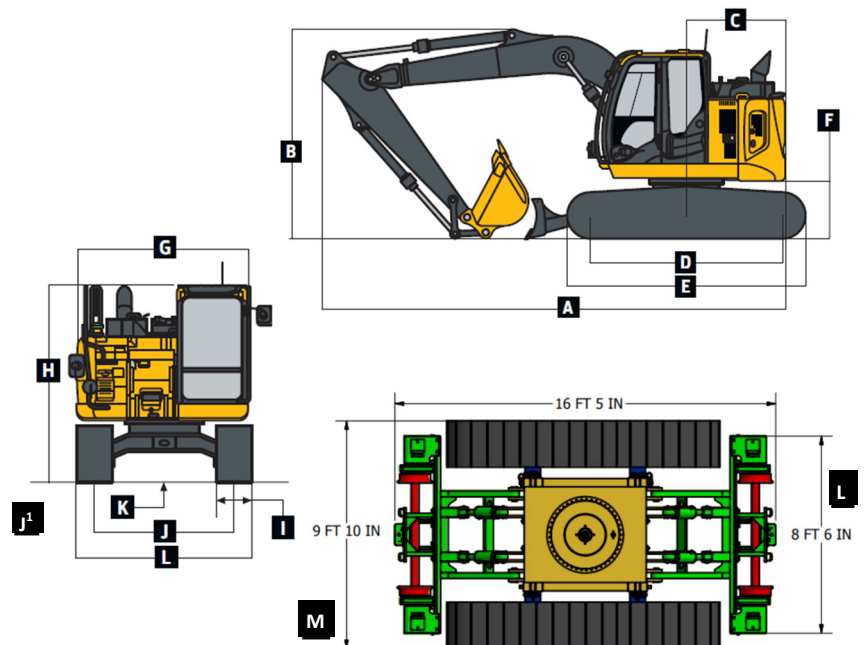
#### Excavator Reach Dimensions - 9'11" Arm

A: Maximum Reach                      29'02"  
 B: Maximum Reach at Ground Level   28'04"  
     B<sup>1</sup>: Maximum Reach at 8' Flat Bottom 19'02"  
 C: Maximum Cutting Height           31'08"  
 D: Maximum Dumping Height         23'04"  
 E: Minimum Swing Radius             8'04"



#### Overall Dimensions with Rail Gear

A: Overall Length (without rail gear)   24'03"  
     Overall Length (with rail gear)   26'07"  
 B: Overall Height                       9'01"  
 C: Rear-End Length/Swing Radius       4'11"  
 D: Distance Between Idler/Sprocket CL   9'05"  
 E: Undercarriage Length               11'09"  
 F: Counterweight Clearance             33"  
 G: Upperstructure Width                8'02"  
 H: Cab Height                           9'05"  
 I: Track Pad Width                       20"  
 J: Gauge Width (tracks narrow)         6'06"  
     J<sup>1</sup>: Gauge Width (tracks wide)     7'10"  
 K: Ground Clearance                    16"  
 L: Overall Width (tracks narrow)       8'06"  
 M: Overall Width (tracks wide)         9'10"  
 N: Outside width of high-rail system   8'06"



### REFILL CAPACITIES

Fuel Tank	58 gal	Swing Gear	3.2 qt
Cooling System	22.2 qt	Final Drive	4.2 qt
Engine Oil with Filter	18 qt	DEF Tank	12.7 qt
Hydraulic Tank	15.9 gal		

**WWW.RCEQUIP.COM**

**866-472-4570**

