

# 245P

## RAILAVATOR



### KEY FEATURES

- Patented High-Rail System allowing for speeds in excess of 20 mph
- 2.1 mph (low) / 3.4 (high) mph Off-Track Speed
- Internal Wet Disk Axle Braking System
- Lifetime JD Link Telematics Subscription
- 500 hr Engine Service Intervals
- Serviceable by the Nationwide John Deere Dealer Network
- Low High-Rail Center of Gravity

### ACCESSORIES AND OPTIONS

Ultra-Life HD-2 Axles  
28" Wheel Upgrade  
Multi-Circuit Hydraulic Package  
High-Flow Auxiliary Package  
Cart Tow Hitch with Hydraulic Cart Brake  
Circuit Boom Anti-Drift Valve  
Insulated High-Rail  
Lower Tool Boxes  
Additional Hand Rails

### STANDARD SPECIFICATIONS

Isuzu 4HK1  
PA inal Tier 4/EU Stage IV  
128kW (172.2 hp) at 2,000 rpm  
4 Cylinder 5.19 L (317 cu. in.)  
212 x 2 + 89 L/m (56 x 2 + 50 gpm)  
24 Volt - 50 Amp Alternator

### RAILAVATOR SPECIFICATIONS

Hydraulically Powered High Rail Gear  
In-Cab Touch Screen Control Center  
Beacon  
24V to 12V Converter  
Pattern Changer  
Battery Disconnect  
Front & Rear Auxiliary Lights  
Fire Extinguisher  
Remote Oil Drain  
Window Guards  
Camera System (for rail mounting)  
Nonmetallic Soft Pads  
24" Rail Wheels  
HD-1 Axles With Oversized Bearings



# 245P

## RAILAVATOR



### DIMENSIONS AND WEIGHTS

Operating Weight - 68,750 lbs (without attachments)

Arm Digging Force (9'07")

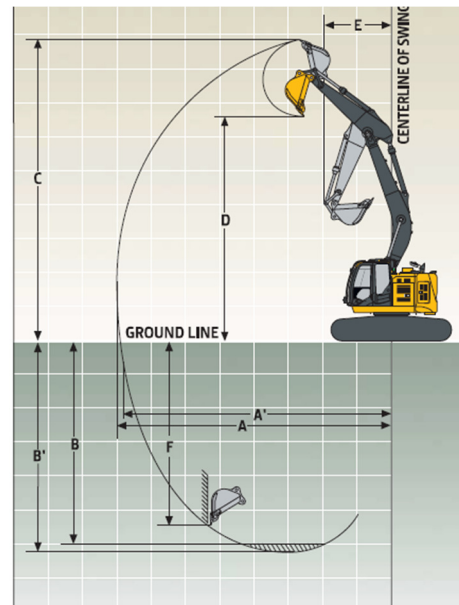
SAE 24,740 lbs                      ISO 25,630 lbs

Bucket Digging Force

SAE 31,700 lbs                      ISO 35,520 lbs

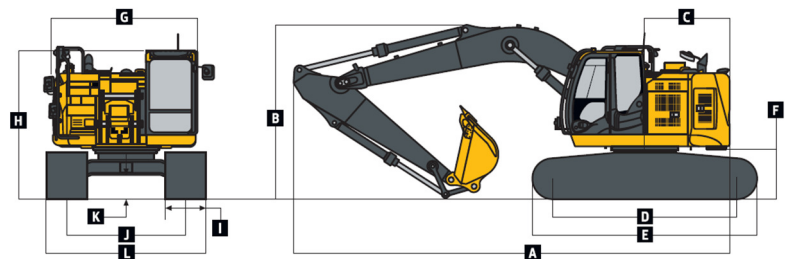
#### Dimensions - 9'07" Arm

A: Maximum Reach	33'04"
A <sup>1</sup> : Maximum Reach at Ground Level	32'06"
B: Maximum Digging Depth	21'08"
B <sup>1</sup> : Max Digging Dept 8' Flat Bottom	20'10"
C: Maximum Cutting Height	36'08"
D: Maximum Dumping Height	27'06"
E: Minimum Swing Radius	7'06"
F: Maximum Vertical Wall	19'02"



#### Overall Dimensions with Rail Gear

A: Overall Length (without rail gear)	29'11"
B: Overall Height	9'11"
C: Tail Swing Radius	5'06"
D: Distance Between Idler/Sprocket CL	12'0.1"
E: Undercarriage Length	14'7.6"
F: Counterweight Clearance	3'2.6"
G: Upperstructure Width	9'8.9"
H: Cab Height	9'11.3"
I: Track Width	32"
J: Gauge Width	7'10"
K: Ground Clearance (without rail gear)	18"
L: Overall Width (32" Pads)	10'5.6"



### REFILL CAPACITIES

Fuel Tank	100 gal	Hydraulic System	63.4 gal
Cooling System	29.6 qt	Diesel Exhaust Fluid	16.9 gal
Engine Oil with Filter	24.3 qt	Swing Mechanism	6.6 qt
Hydraulic Tank	34.3 gal	Travel Device	7.2 qt

**WWW.RCEQUIP.COM**

**866-472-4570**

