

50P

RAILAVATOR



KEY FEATURES

- Patented High-Rail System allows speeds in excess of 20 mph
- Hydraulically Expandable Undercarriage to allow straddling of track
- 1.6 mph (low) /2.6 (high) mph Off-Track Speed
- Spring Applied/Hydraulically released dry shoe brakes
- 500 hr Engine Service Intervals
- Low High-Rail Center of Gravity
- Serviceable by the Nationwide John Deere Dealer Network

ACCESSORIES AND OPTIONS

Multi-Circuit Hydraulic Package
Boom Anti-Drift Valve
Insulated High-Rail
Window Guards
Polycarbonate Glass
Boom Hand Pump
Rail Clamps

STANDARD SPECIFICATIONS

Yanmar 4TNV88C
EPA Final Tier 4/EU Stage IV
26.8 kW (35.9 hp) at 2,400 rpm
4 Cylinder 2.19 L (134 cu. in.)
Variable-Displacement Hyd Pump
120 L/m (31.7 gpm) Max Hyd Flow
12 Volt - 55 Amp Alternator

RAILAVATOR SPECIFICATIONS

Hydraulically Powered High Rail Gear
12" Rail Wheels
In-Cab Touch Screen Control Center
Beacon
Pattern Changer
Battery Disconnect
Front & Rear Auxiliary Lights
Fire Extinguisher
Manual Quick Coupler



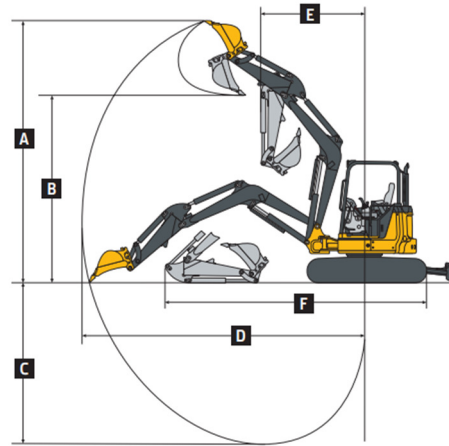
50P

RAILAVATOR



DIMENSIONS AND WEIGHTS

Operating Weight - 14,800 lbs (without attachments)
Arm Digging Force (5'07") ISO 4,718 lbs
Bucket Digging Force ISO 8,267 lbs

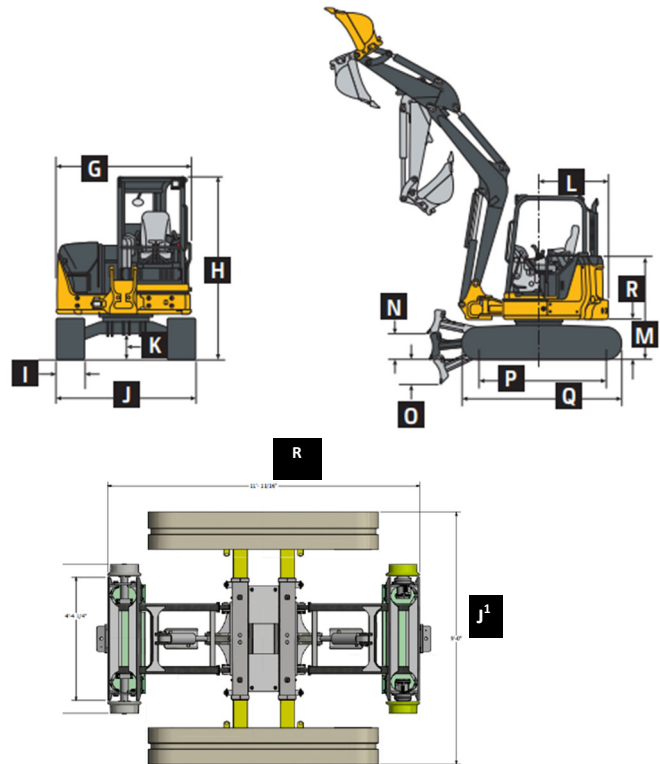


Dimensions - 5'07" Arm

A: Maximum Cutting Height	19'08"
B: Maximum Dumping Height	14'02"
C: Maximum Digging Depth	12'07"
D: Maximum Digging Reach	20'06"
E: Minimum Front Swing Radius	07'07"
F: Transport Length	18'01"

Overall Dimensions with Rail Gear

G: Upperstructure Width	6'01"
H: Overall Height	8'04"
I: Track Width	6'07"
J: Undercarriage Width (narrowed)	6'10"
J ¹ : Undercarriage Width (wide)	9'
K: Ground Clearance	13"
L: Tail Swing Radius	43"
M: Engine Cover Height	5'03"
P: Sprocket Center to Idler Center	6'07"
Q: Track Length	8'02"
R: Overall Length with High-Rail	11'01"



REFILL CAPACITIES

Fuel Tank	18.5 gal
Cooling System	5.3 qt
Engine Oil with Filter	9.1 qt
Hydraulic Tank	14.8 gal

WWW.RCEQUIP.COM

866-472-4570

