

85P

RAILAVATOR



KEY FEATURES

- Patented High-Rail System allows speeds in excess of 20 mph
- Hydraulically Expandable Undercarriage to allow straddling of track
- 1.9 mph (low) /3.1 (high) mph Off-Track Speed
- Spring Applied/Hydraulically released dry shoe brakes
- 500 hr Engine Service Intervals
- Low High-Rail Center of Gravity
- Serviceable by the Nationwide John Deere Dealer Network

ACCESSORIES AND OPTIONS

Multi-Circuit Hydraulic Package
Boom Anti-Drift Valve
Insulated High-Rail
Window Guards
Polycarbonate Glass
Boom Hand Pump
Rail Clamps

STANDARD SPECIFICATIONS

Yanmar 4TNV98CT
EPA Final Tier 4/EU Stage IV
50.4 kW (67.6 hp) at 2,000 rpm
4 Cylinder 3.3 L (202 cu. in.)
3 Variable-Displacement Axial-Piston Pumps
2 X 72 + 56 L/m (2 x 19) + 15 gpm)
24 Volt - 60 Amp Alternator

RAILAVATOR SPECIFICATIONS

2-Speed Hydraulically Powered High Rail Gear
4 Independent Drives in each Wheel
16" Rail Wheels
In-Cab Touch Screen Control Center
Beacon
24V to 12V Converter
Pattern Changer
Battery Disconnect
Front & Rear Auxiliary Lights
Fire Extinguisher



85P

RAILAVATOR

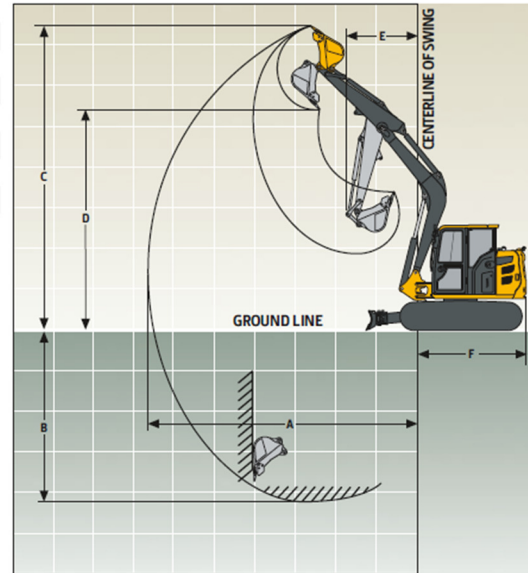


DIMENSIONS AND WEIGHTS

Operating Weight - 20,700 lbs (without attachments)
 Arm Digging Force (6'11") ISO 7,936 lbs
 Bucket Digging Force ISO 13,264 lbs

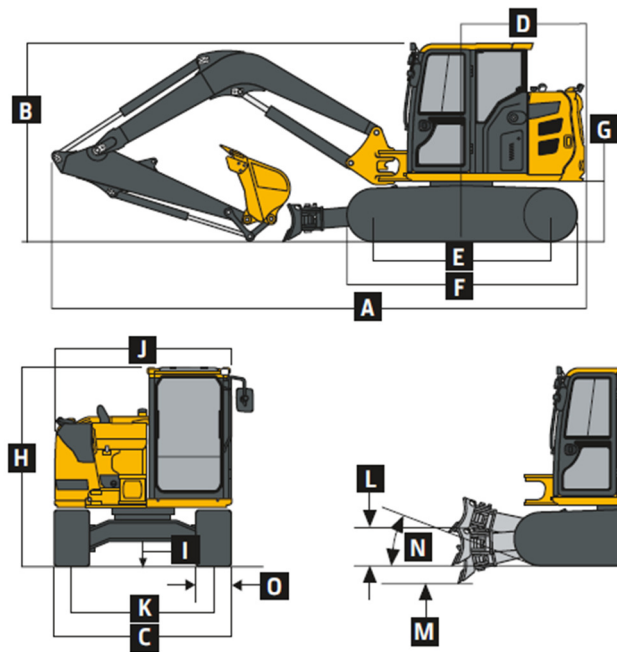
Dimensions - 6'11" Arm

A: Maximum Cutting Height	23'07"
B: Maximum Dumping Height	16'10"
C: Maximum Digging Depth	14'10"
D: Maximum Digging Reach	24'10"
E: Minimum Swing Radius	08'10"
F: Tail-Swing Radius	05'03"



Overall Dimensions with Rail Gear

A: Overall Length	11'06"
B: Overall Height in Transport Position	8'03"
C: Undercarriage Width (narrowed)	8'06"
C ¹ : Undercarriage Width (wide)	9'10"
D: Rear-End Length/Swing Radius	5'03"
E: Sprocket Center to Idler Center	7'06"
F: Undercarriage Length	9'06"
G: Counterweight Clearance	28"
H: Cab Height	8'03"
I: Ground Clearance	14"
J: Upperstructure Width	7'05"
K: Gauge Width	5'09"
L: Blade Lift Height	19"
M: Blade Cut Below Grade	16"
N: Blade Lift Angle	26 deg
O: Track Width	18"



REFILL CAPACITIES

Fuel Tank	33 gal
Cooling System	3.5 gal
Engine Oil with Filter	3.2 gal
Hydraulic Tank	14 gal
Hydraulic System	26 gal
Propel Gearbox (each)	1.3 qt

WWW.RCEQUIP.COM

866-472-4570

