

85P MAG CRANE



KEY FEATURES

- Hydraulic Driven Drive Axles with Integrated Dynamic/Failsafe Braking Standard
- Reduced Tail Swing and Independent Swing Boom
- Hydraulic Gen Set & 30" Magnet w/ Helac Rotator
- JD Link Telematics
- 500 Hr Engine Service Intervals
- Serviceable by the Nationwide John Deere Dealer Network

ACCESSORIES AND OPTIONS

Multi-Circuit Hydraulic Package
High-Flow Auxiliary Package
Cart Tow Hitch with Hydraulic Cart Brake
Boom Circuit Anti-Drift Valve
Lower Tool Boxes
Additional Hand Rails
30" Magnet & Magnet Mount
9KW Generator & 18cc Hydraulic Motor
Vision360
Tie Grapple
Scrap Cart

STANDARD SPECIFICATIONS

Yanmar 4TNV98CT
EPA Final Tier 4/EU Stage IV
50.4 kW (67.6 hp) at 2,000 rpm
4 Cylinder 3.3 L (202 cu. in.)
3 Variable-Displacement Hyd Pumps
2 X 72 + 56 L/m ((2 x 19) + 15 gpm)
24 Volt - 60 Amp Alternator

MAG CRANE SPECIFICATIONS

Hydraulically Powered On-Rail Gear
In-Cab Touch Screen Control Center
16" Rail Wheels
1000 lb. Additional Counterweight
Beacon
Pattern Changer
Battery Disconnect
Front & Rear LED Auxiliary Lights
Fire Extinguisher
Remote Oil Drain
Window Guards
Camera System
Jackstands



85P MAG CRANE



DIMENSIONS AND WEIGHTS

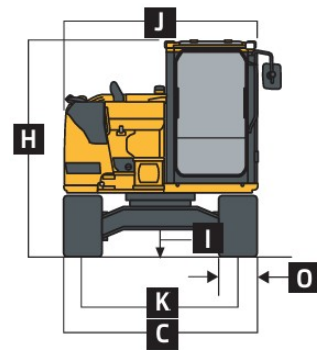
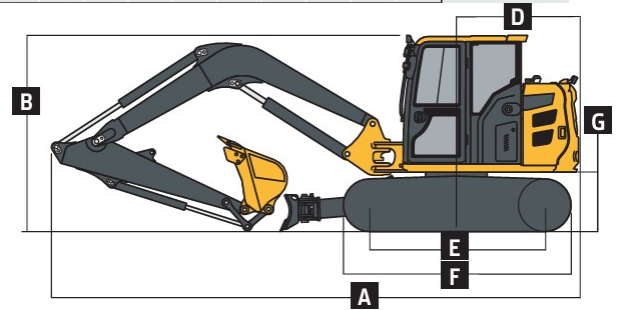
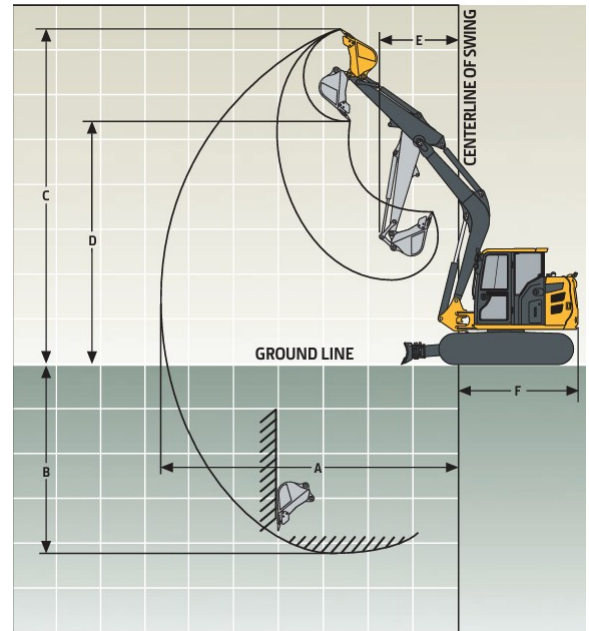
Operating Weight	19,720 lbs (without attachments)
Arm Digging Force	ISO 7,936 lbs
Bucket Digging Force	ISO 13,264 lbs

Dimensions – 6'11" Arm

A: Maximum Reach	24'10"
B: Maximum Digging Depth	14'10"
C: Maximum Cutting Height	23'07"
D: Maximum Dumping Height	16'10"
E: Minimum Swing Radius	8'10"

Overall Dimensions with Rail Gear

A: Overall Length	22'03"
B: Overall Height	8'03"
C: Undercarriage Width	7'03"
D: Rear-End Length/Swing Radius	5'03"
E: Distance Between Idler/Sprocket Center Line	7'06"
F: Undercarriage Length	9'06"
G: Counterweight Clearance	28"
H: Cab Height	8'03"
I: Ground Clearance	14"
J: Upperstructure Width	7'05"
K: Gauge Width	5'09"
L: Track Width (18" Pads)	18"



REFILL CAPACITIES

Fuel Tank	33 gal
Cooling System	3.5 gal
Engine Oil with Filter	3.2 gal
Hydraulic Tank	14 gal
Hydraulic System	26 gal
Propel Gear Box (each)	1.3 qt